

Ptarmigan Concept Sketch

Cairngorm Mountain Centre
Drawing Number SK-017



Stevens & Associates



Highlands and Islands Enterprise



view
marketing



JOHNSTON
CARMICHAEL
keppie

Interior Concepts

ROBUST, DRAMATIC, DYNAMIC

The concept for the interior is the creation of key journey points from the entrance, embarking the train to arrival at the Ptarmigan. The choice of materials, colours and graphics should emulate a robust, dynamic and dramatic environment reflecting both the sporting side and the nature/wildlife of the park.

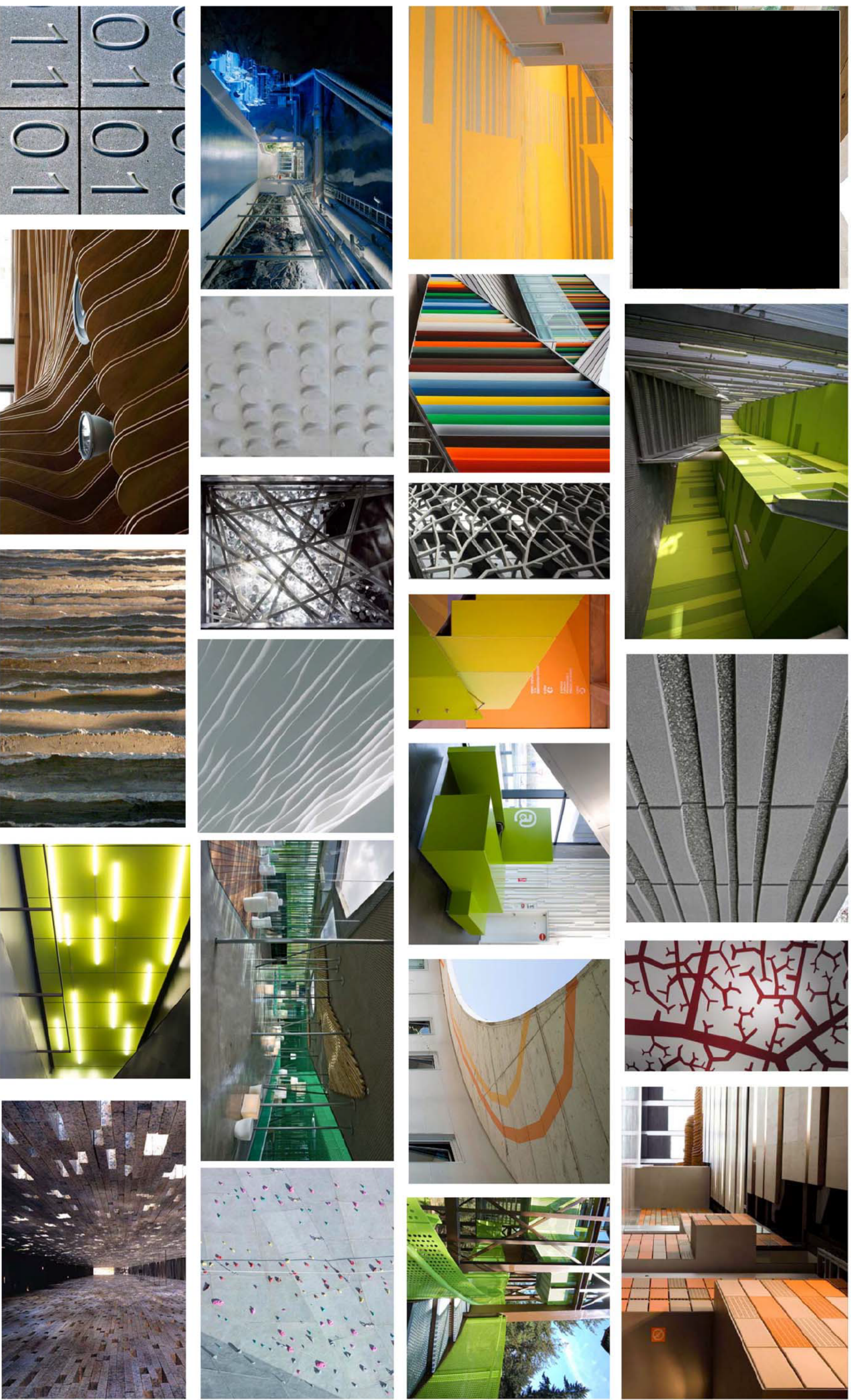
Concrete, stone, steel, and timber are the main proposed materials used with vibrant colour, relief and in different forms.

Graphics could be used abstractly both in image and text form. There could also be an opportunity to bring the park branding through the interior. Technology could be used for example to display webcam images and updates of weather and information.

Clever use of lighting can be used differently in the key journey points eg lower level lighting with use of colour in the entrance area.



Interior Concepts

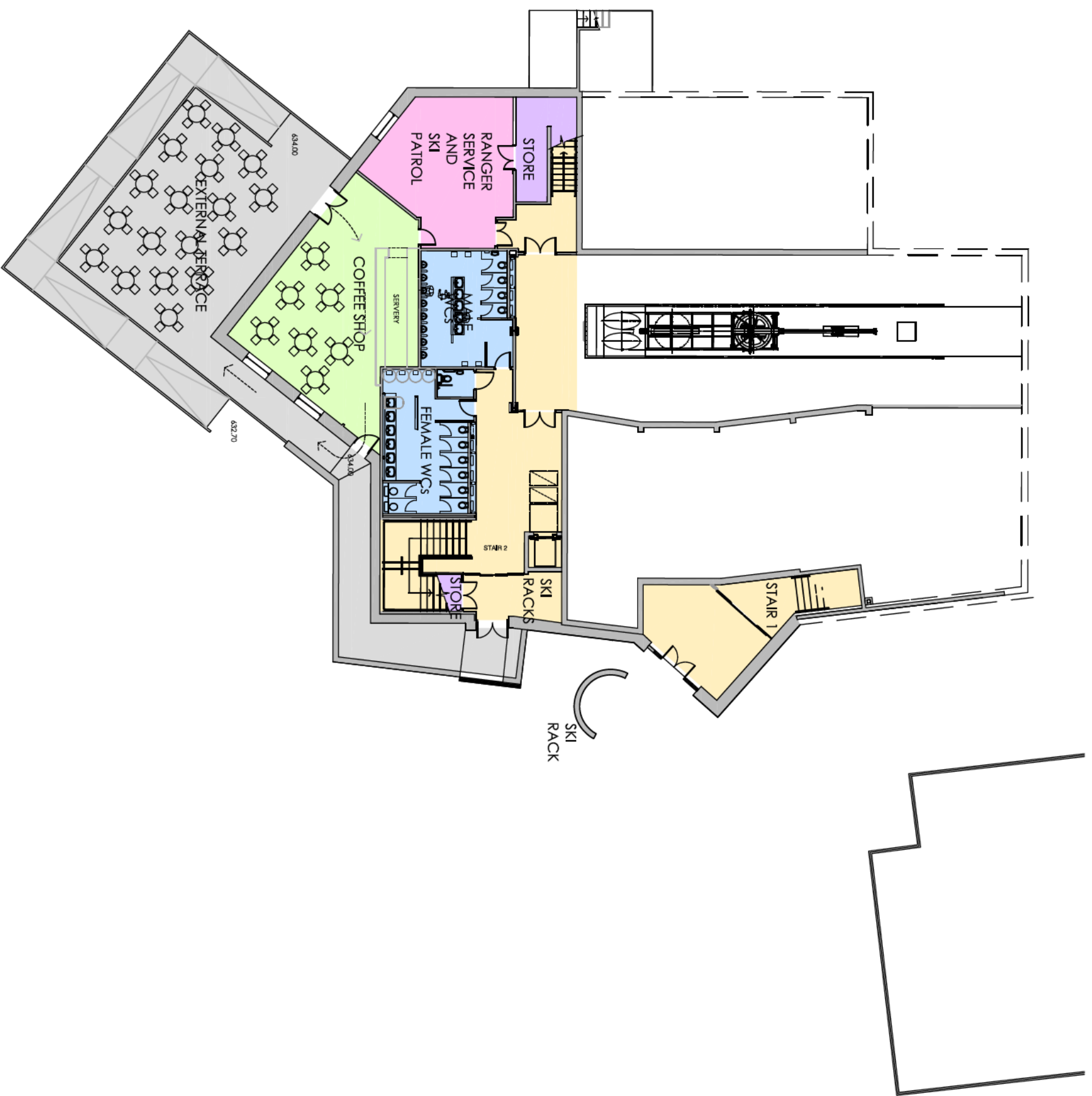


Cairngorm Mountain Centre
Materials, Colour, Forms, Light

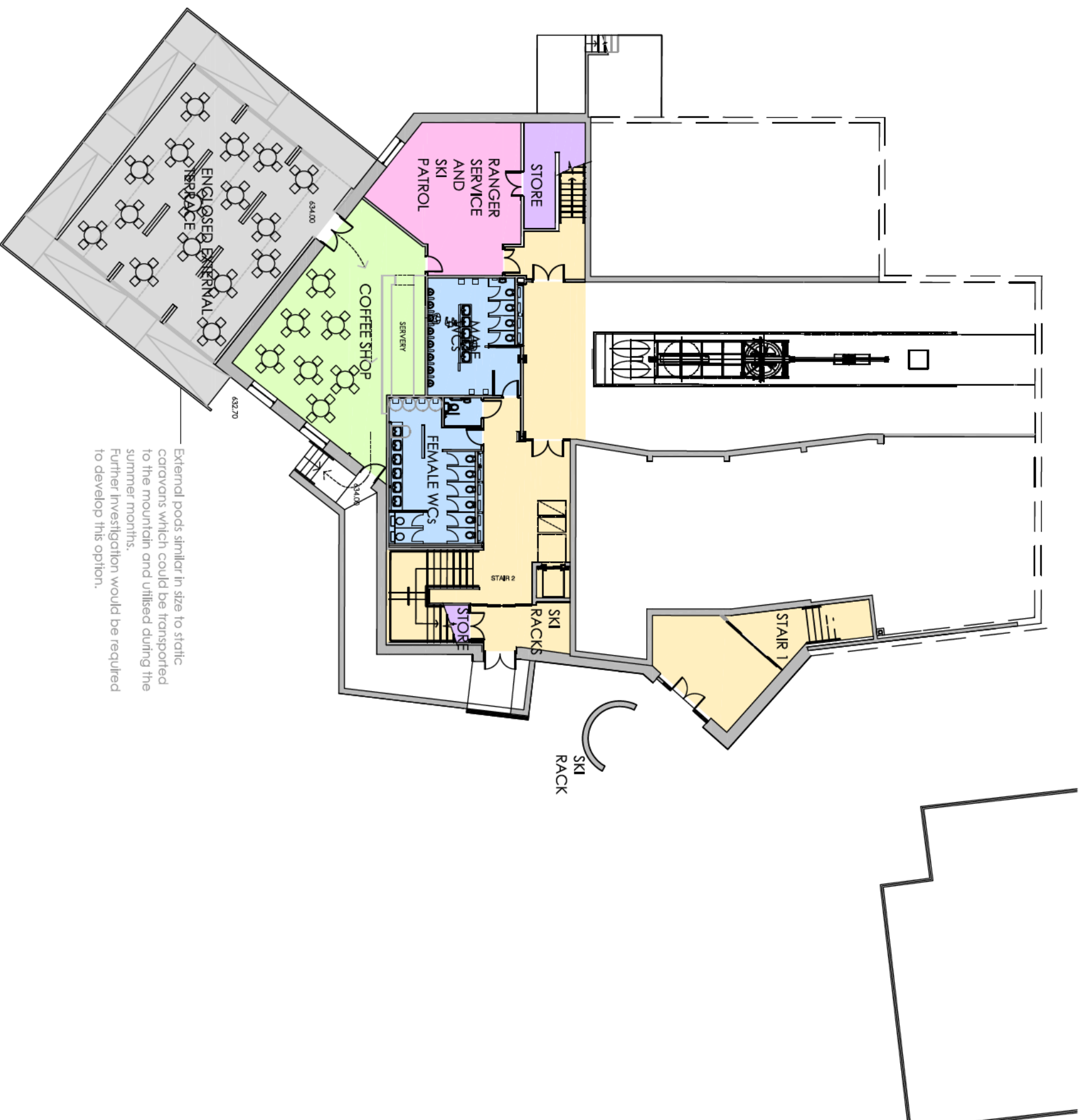


Interior Concepts



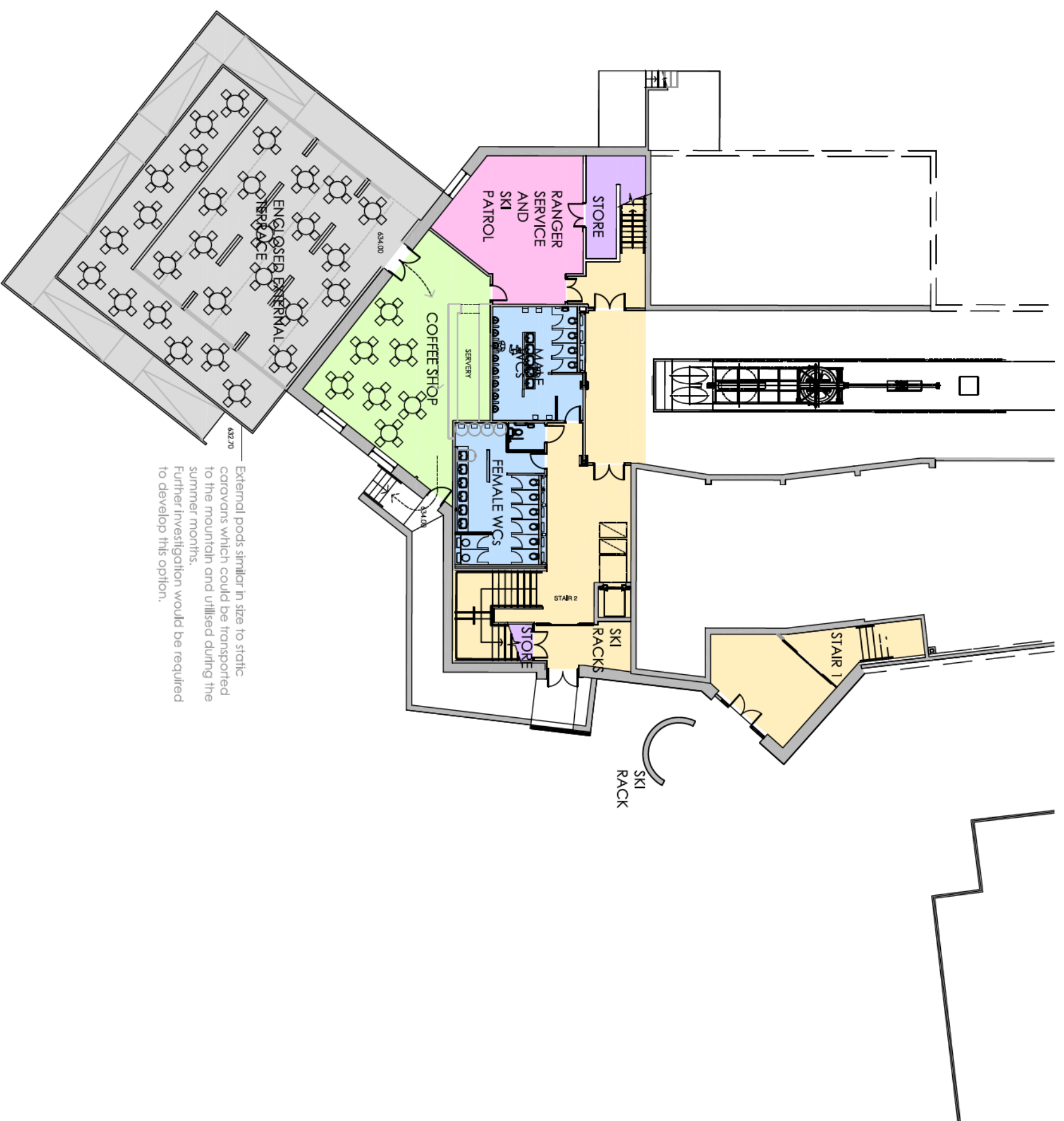


Lower Ground Option 1

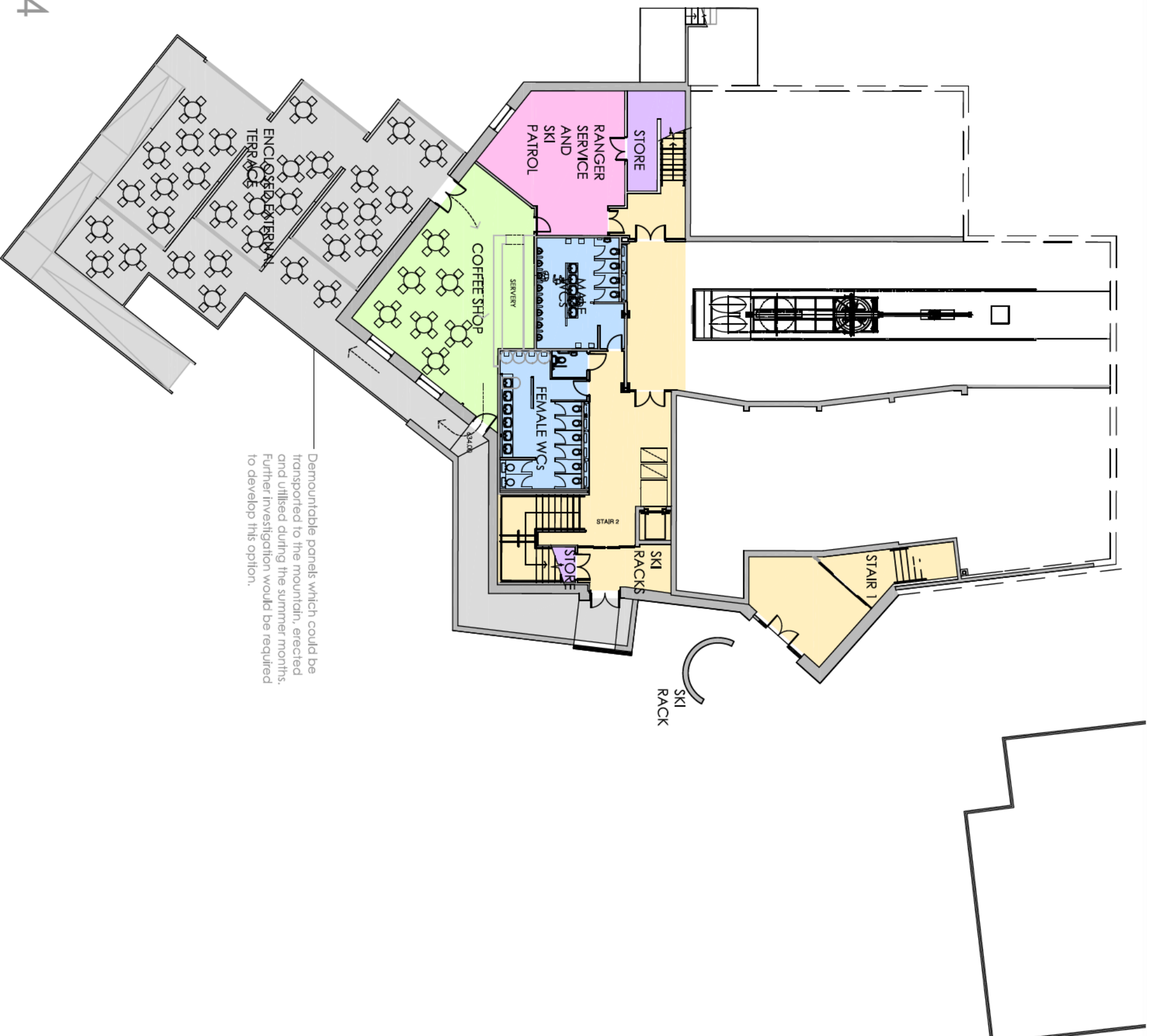


External pods similar in size to static caravans which could be transported to the mountain and utilised during the summer months. Further investigation would be required to develop this option.

Lower Ground Option 2

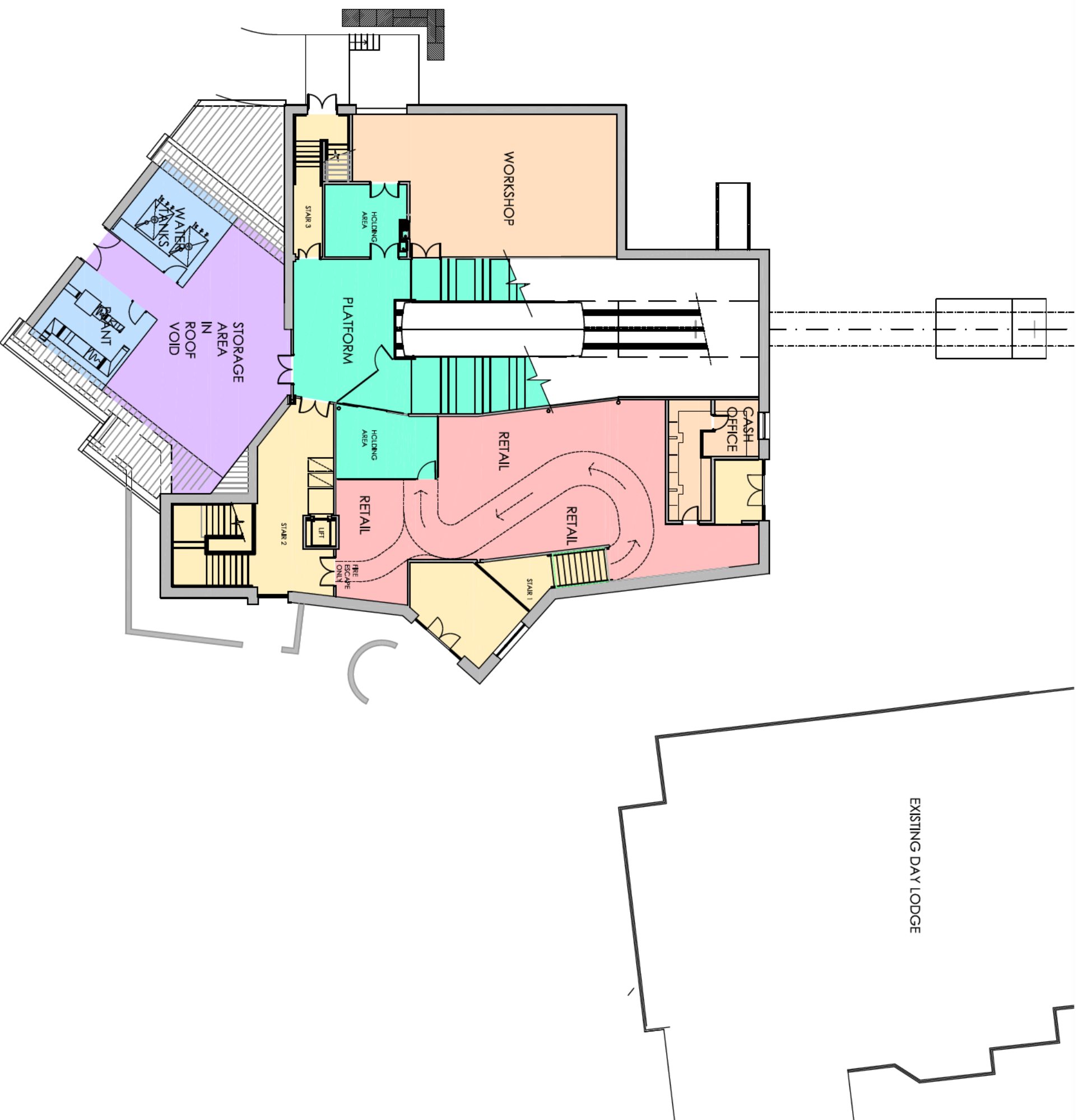


Lower Ground Option 3



Lower Ground Option 4

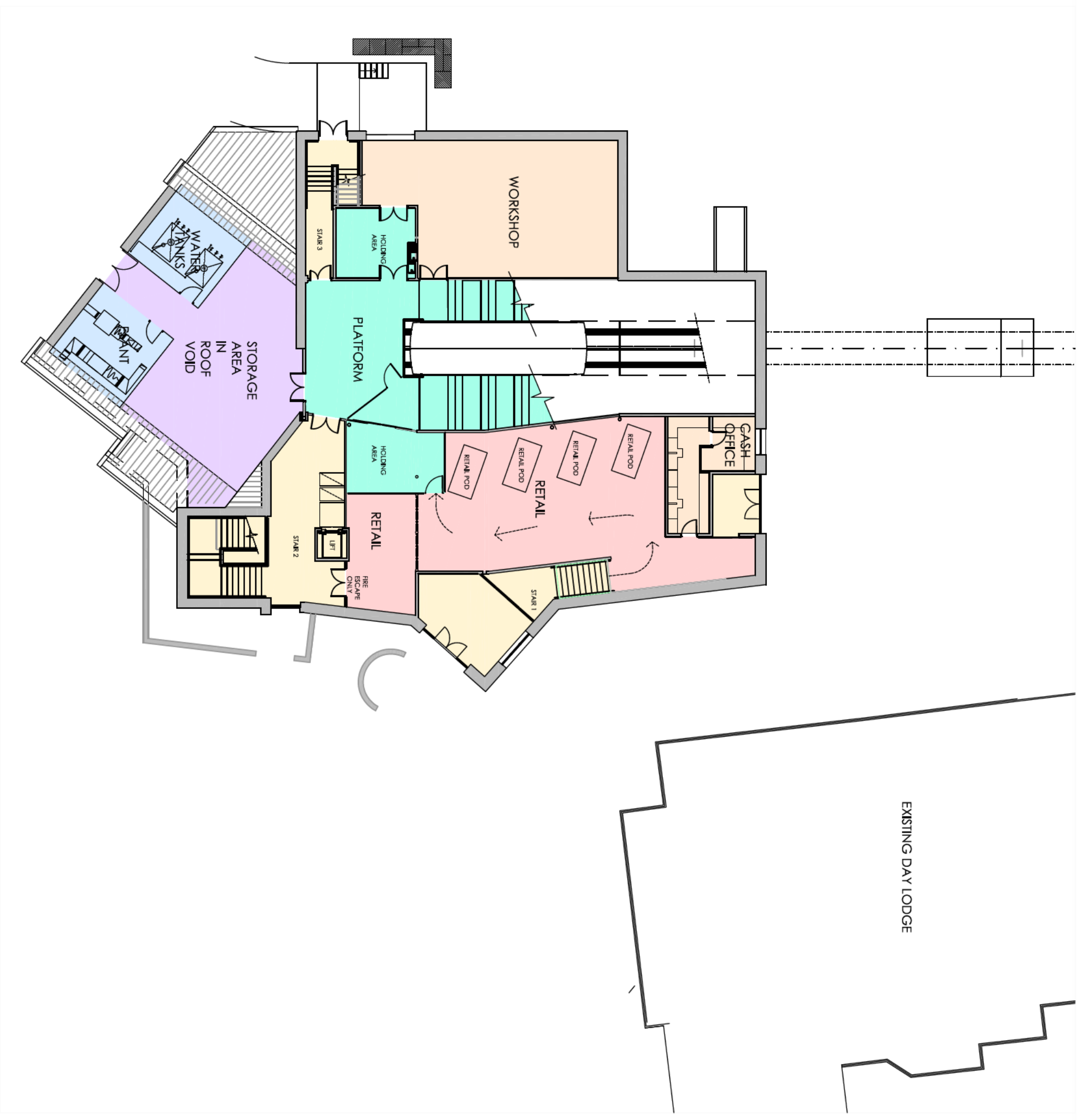
Ground Option 1

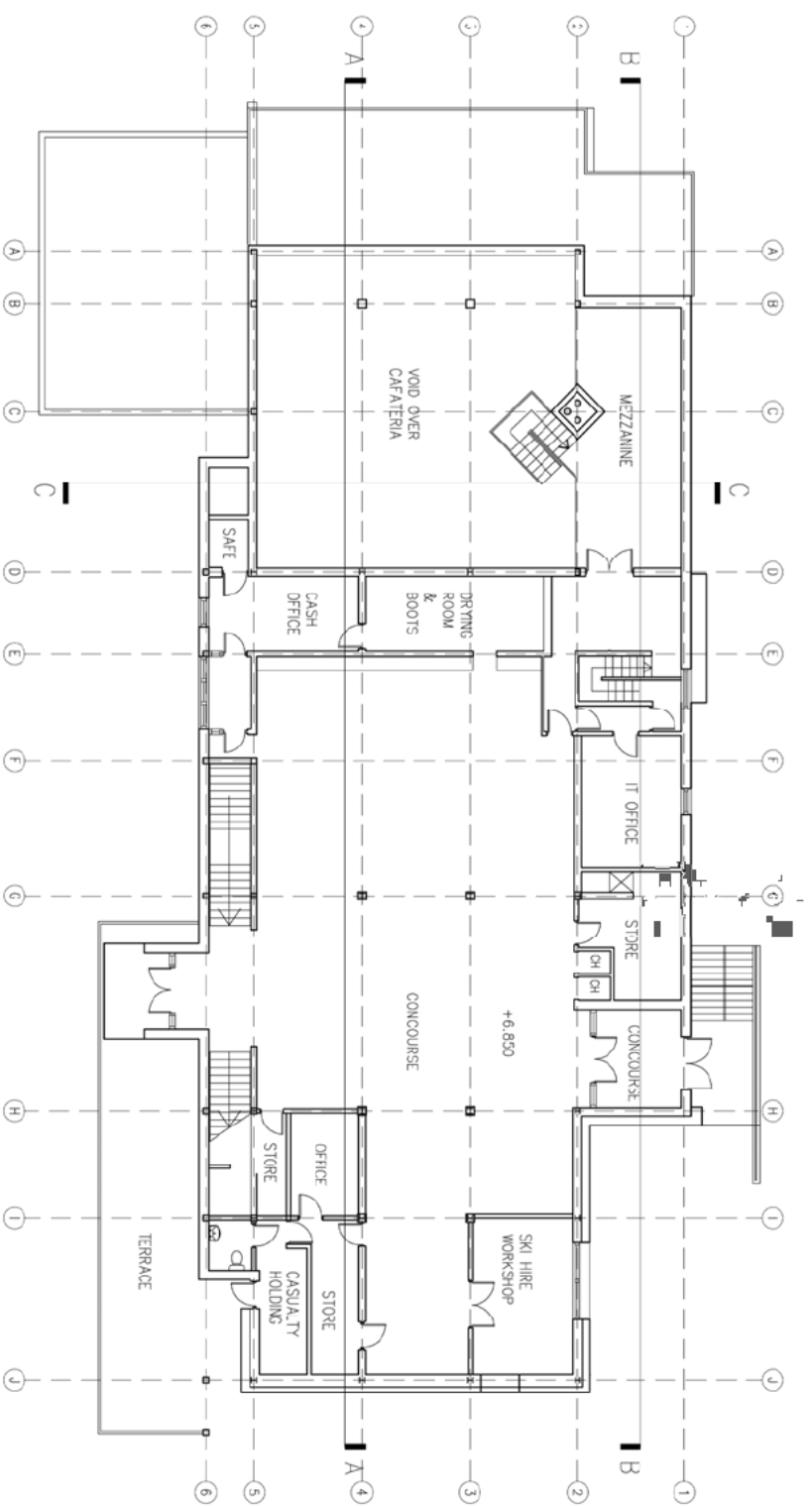




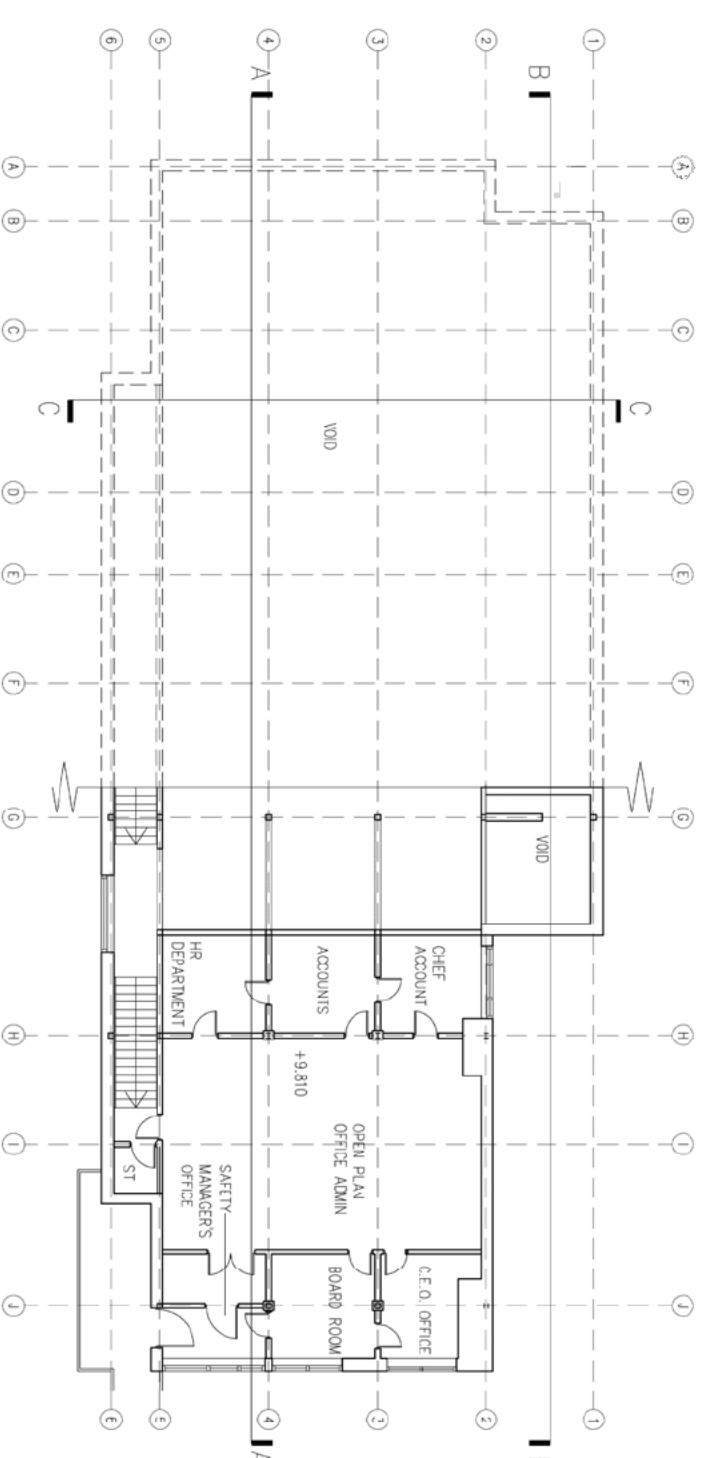
Retail 'pods'

Ground Option 2

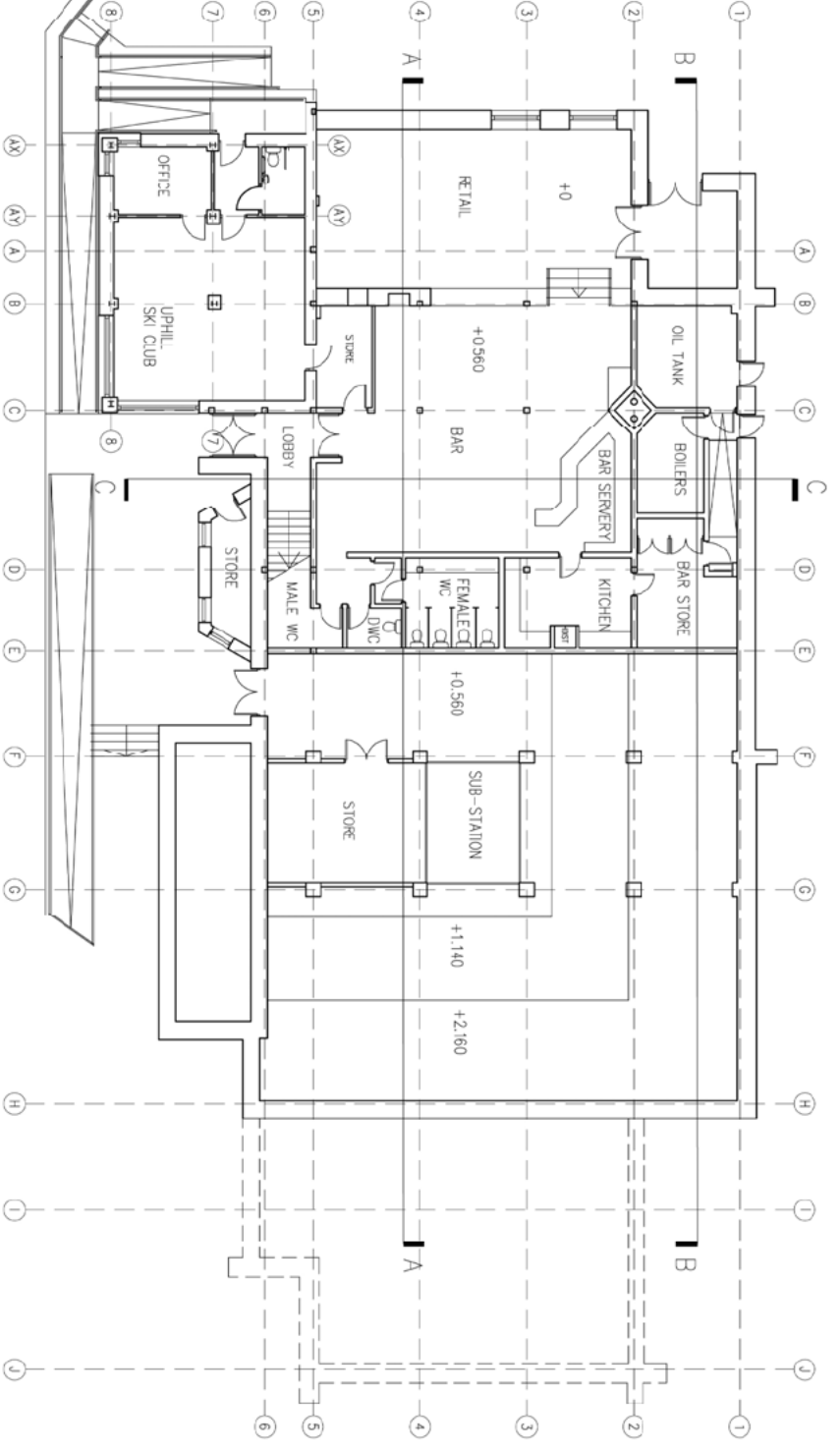




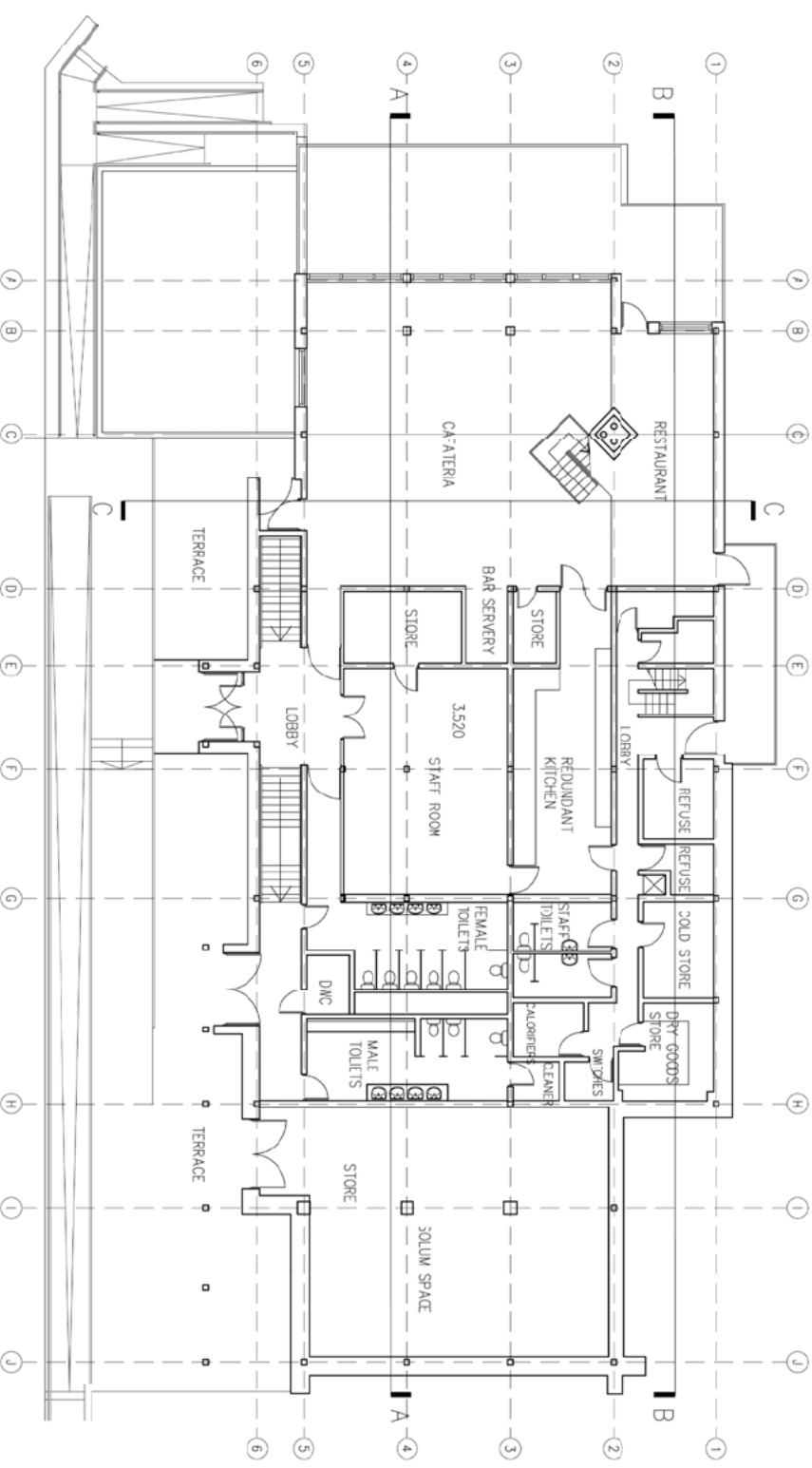
First



Second



Lower Ground



Ground

Existing Day Lodge Plans